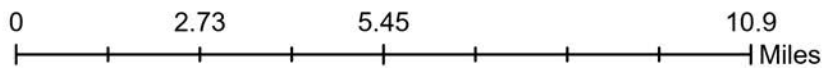
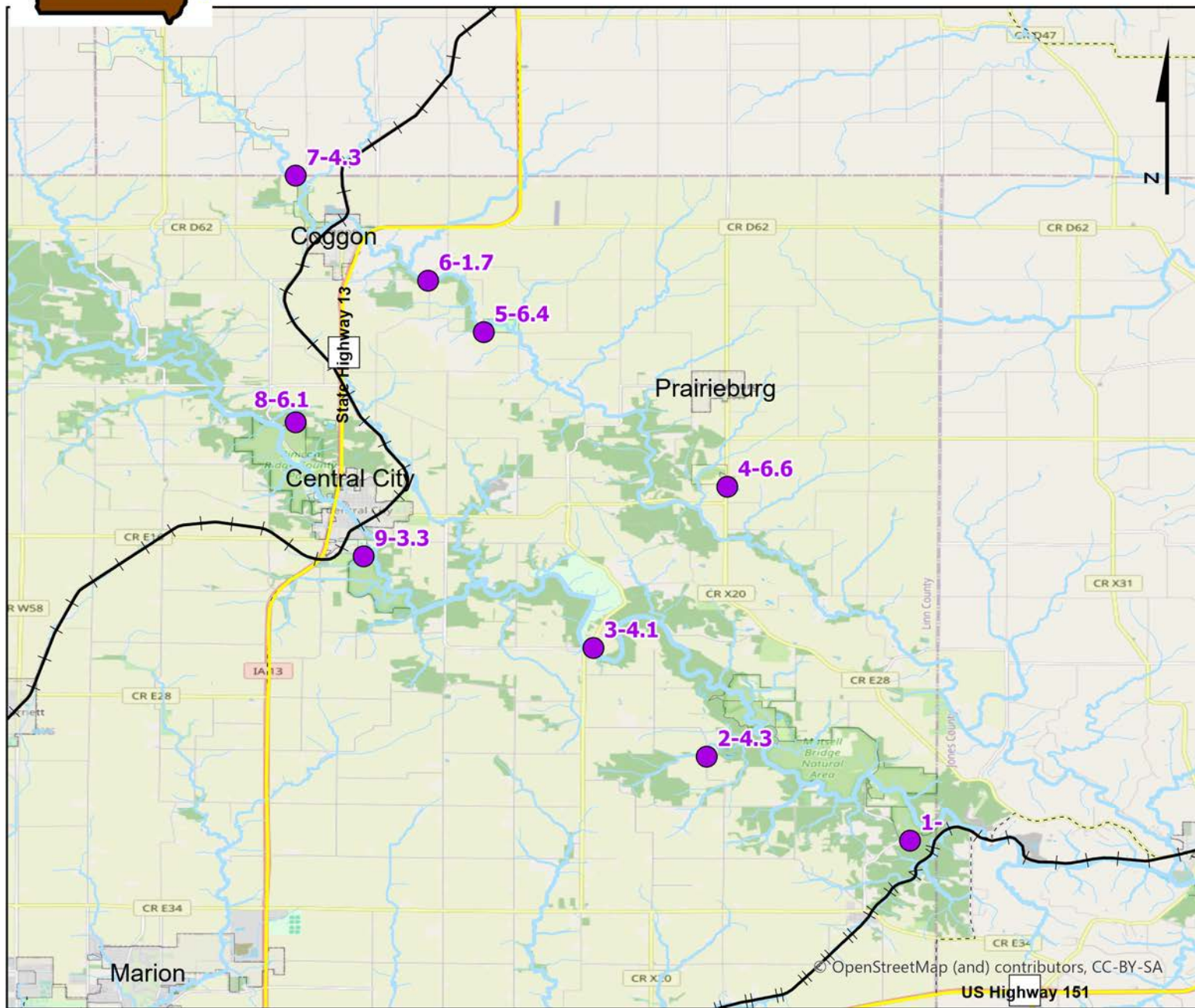


# Volunteer Wildlife Monitoring Program (VWMP) Frog and Toad Survey

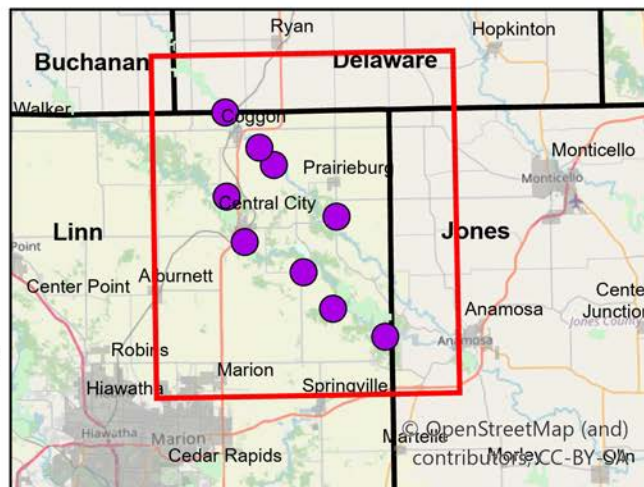
Route ID: 360612 County: Linn



## Legend

----- Trails

● Survey Stops

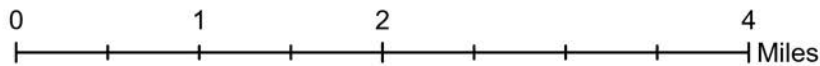
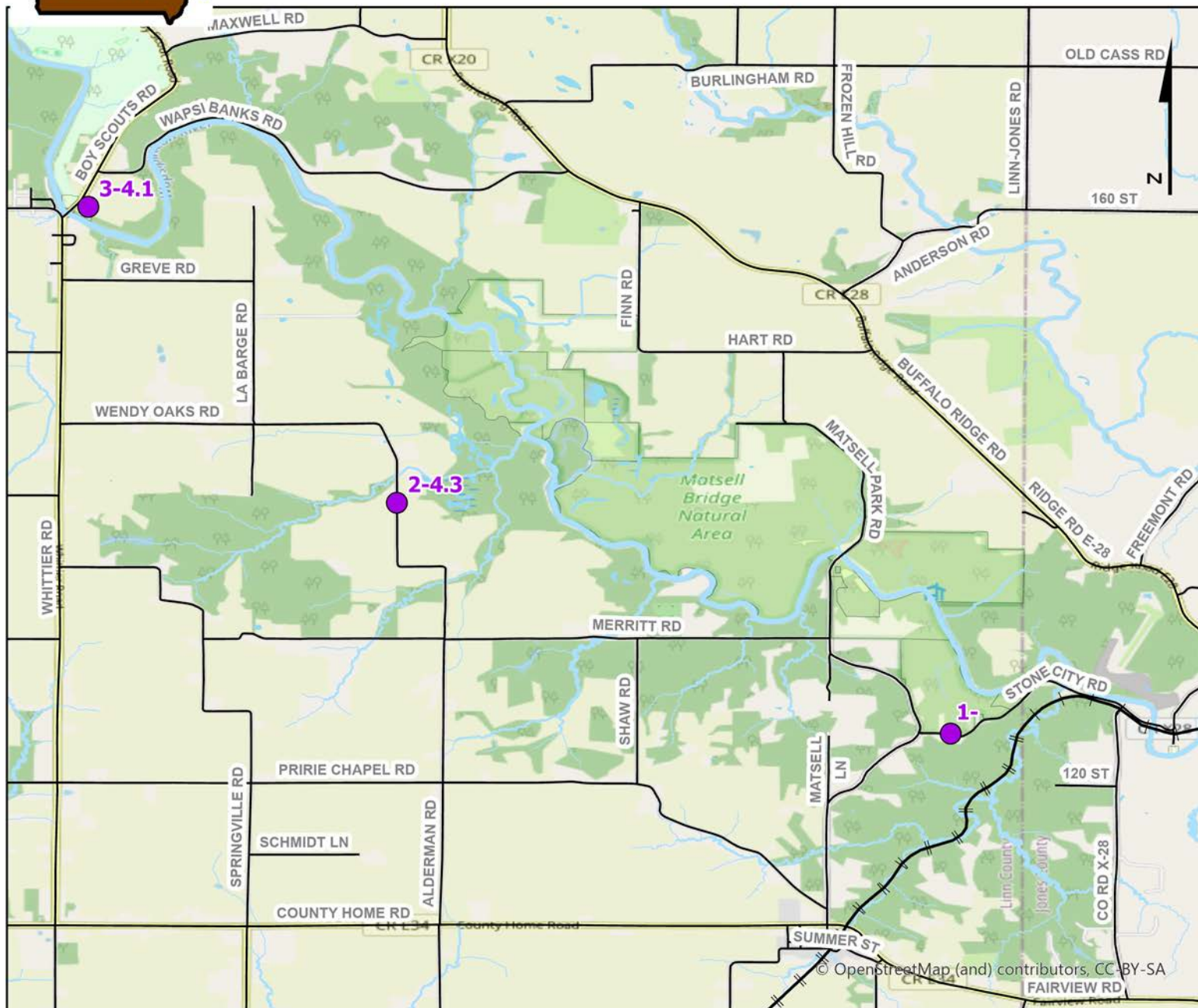




# Volunteer Wildlife Monitoring Program (VWMP) Frog and Toad Survey

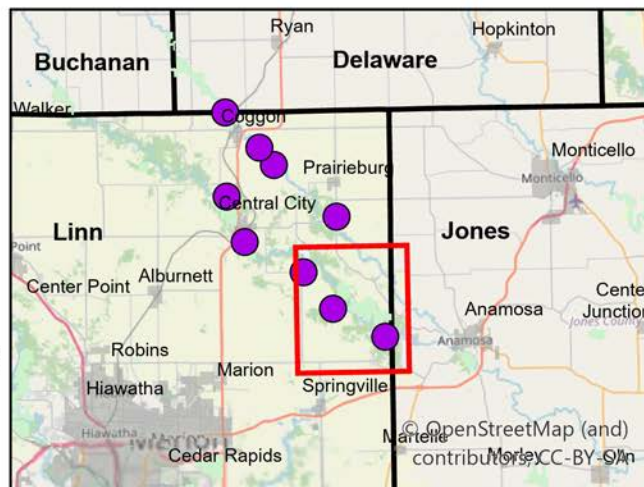


Route ID: 360612 County: Linn



## Legend

- Trails
- Survey Stops

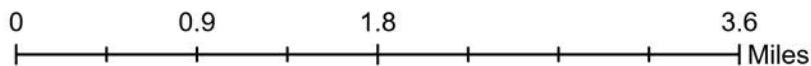
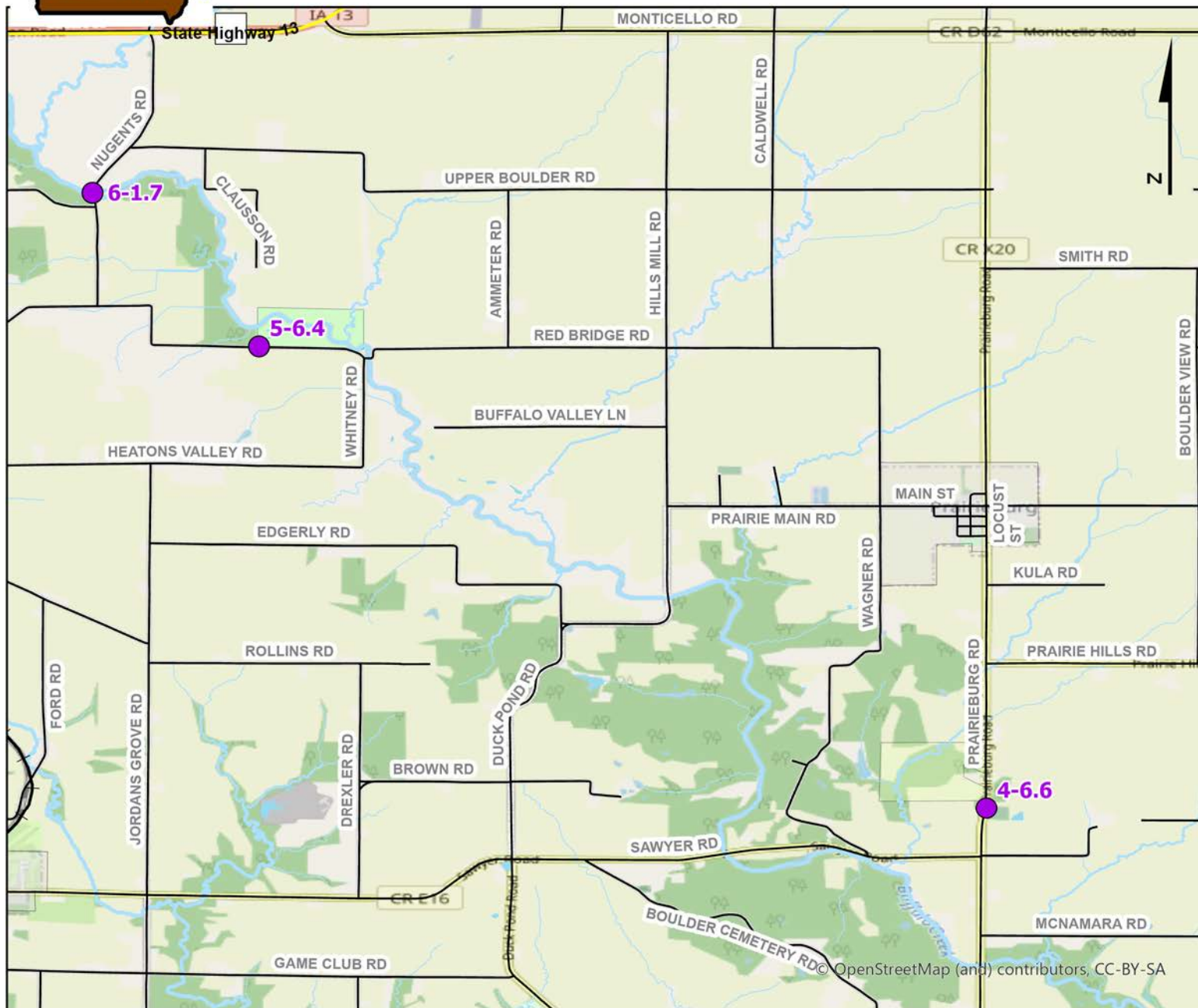




# Volunteer Wildlife Monitoring Program (VWMP) Frog and Toad Survey

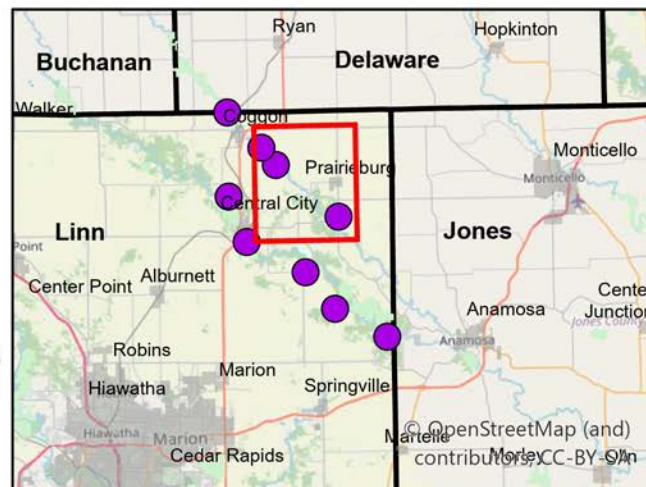


Route ID: 360612 County: Linn



## Legend

- Trails
- Survey Stops

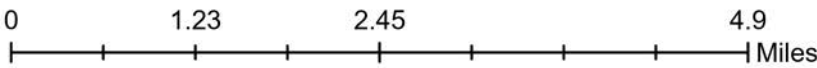
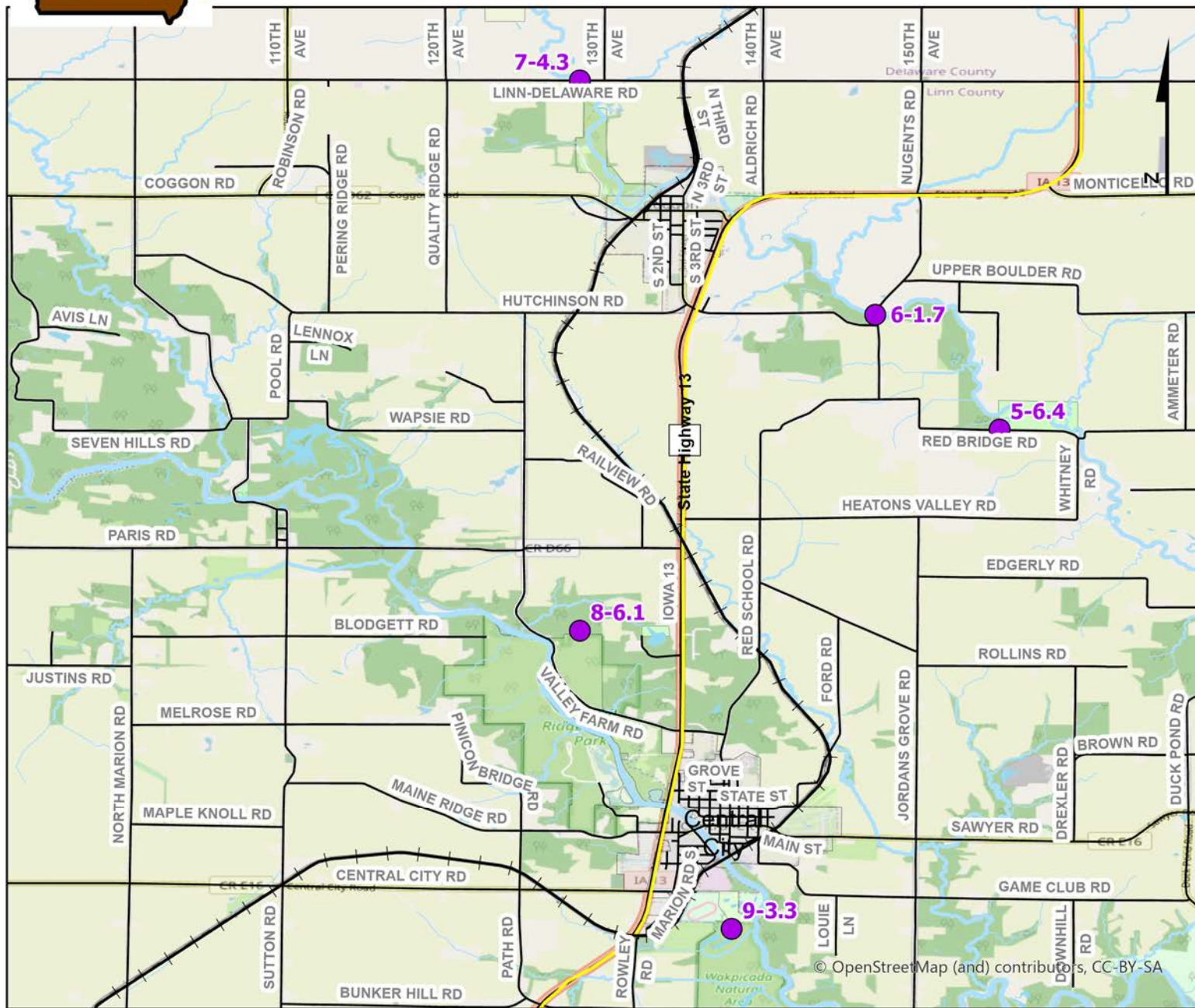




# Volunteer Wildlife Monitoring Program (VWMP) Frog and Toad Survey

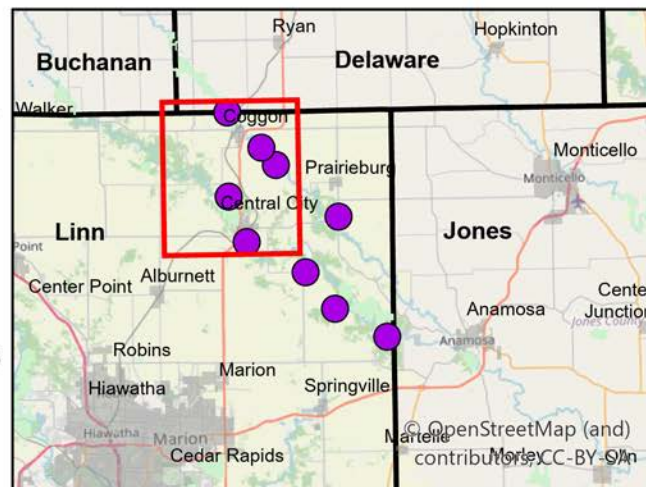


Route ID: 360612 County: Linn



## Legend

- Trails
- Survey Stops





# Frog and Toad Call Survey Route Description

Route ID **360612**

Established:

Site Number	Name	County	Latitude	Longitude	Directions
1		Linn	42.1124992	-91.3721008	Small man made pond upland. Stone city Rd. Pond on left just past intersection
2	4.3	Linn	42.1358986	-91.428299	Small feeder stream, long gravel road
3	4.1	Linn	42.1659012	-91.4596024	Backwater oxbows on right. Jay G Sigmund Memorial site, Linn county conservation
4	6.6	Linn	42.2103996	-91.4225998	Driveway to st. Joseph's cemetery
5	6.4	Linn	42.2531013	-91.4898987	Buffalo creek streamside. Rehraver Natural Area, Linn county conservation
6	1.7	Linn	42.2672997	-91.5053024	Nugents Bridge Backwater
7	4.3	Linn	42.296299	-91.5419006	Large Backwater of Buffalo creek
8	6.1	Linn	42.228199	-91.5419006	Wapsi river turnout/canoe access
9	3.3	Linn	42.1912003	-91.5231018	Wakapicada Natural Area. Oxbows and backwaters of wapsi. Linn County Conservation